



THE POWER OF GREEN

# KRONE excellent Accessories







## KRONE excellent **accessories**

KRONE excellent – this brand name is well-known for high-quality spare and wear parts, a fast and uncomplicated service as well as for a wide range of bale packaging material like wrapping nets, tying twines and silage films. But the KRONE spare parts range offers much more than that: See the following pages for a list of selected accessory products. You will find professional devices for your workshop such as different blade grinding machines.



The KRONE excellent accessories program also offers solutions which makes repairs in the field easier. Just one example are the optimally selected assortment kits which contain spare parts (e. g. sensors, plugs etc.) and associated (special) tools for a quick part exchange. The accessories portfolio is rounded off by a selection of frequently required parts, which are suitable for various farm machines of different brands. Look here to find at a glance a suitable LED working light, a starter battery or a warning panel – not only for KRONE machines.



|   |           |
|---|-----------|
| <b>Workshop accessories</b>             | <b>4</b>  |
| Blade grinding machines                 | 5         |
| Accessories for blade grinding machines | 6         |
| KRONE QuickChange                       | 7         |
| KRONE PowerPack                         | 8         |
| Measuring adapters                      | 10        |
| Special tools                           | 11        |
| Different assortment kits               | 14        |
| <b>Cabin accessories</b>                | <b>28</b> |
| <b>Paints and oils</b>                  | <b>32</b> |
| <b>Machine labels</b>                   | <b>34</b> |
| <b>Multi-brand accessories</b>          | <b>36</b> |

KRONE excellent spare part hotline: +49(0)5977 935-238





## Workshop accessories

Nowadays, tools and devices which facilitate our work have become indispensable for modern farms. The KRONE excellent accessories range offers numerous intelligent time-saving solutions such as sets, devices and tools including the associated material.





# Blade grinding machines

Workshop accessories



## Blade grinding machine (dry)

Order no.: 939 018 1

The KRONE excellent dry grinding machine allows fast and easy manual sharpening of all types of blades. With its sturdy transport rollers, the machine is fit for mobile use and ready to start up at any time without much tooling.



## Blade grinding machine (wet)

Order no.: 938 018 0

The wet grinding machine is particularly noted for its permanent water-cooling. By means of individually adjustable nozzles the blade is cooled directly at the edge during grinding, preventing possible annealing. The cooling water is permanently cleaned and reused so that no constant water supply is required. The machine is easy to operate; thanks to its four stable rolls, it can be moved without great effort.







# Accessories for **blade grinding machines**

## Workshop accessories



### Grinding disc

Order no.: 045 200 0

Applicable for both blade grinding machines (dry and wet). The grinding disc for wet and dry grinding has a long service life and can be replaced fast and easily.



### Blade support

Order no.: 045 200 0

Applicable for both blade grinding machines (dry and wet). Blade supports of other manufacturers are available on request for both devices.

| Order number | For silage wagon/baler                        | Support suitable for machine blade                           |
|--------------|---|--|
| 27 018 079 0 | Ultima  | 20.261.279.1   |
| 27 013 462 0 | Ultima  | 20.064.301.0   |
| 939 019 0    | all Turbo                                     | 347.216.1 (Turbo-G 344.676.0)                                |
| 938 768 0    | all HSD/HSL                                   | 345.144.2 + 339.176.0 + 340.795.3                            |
| 938 817 0    | Titan (long)                                  | 332.970.0  |
| 938 818 0    | Titan (short)                                 | 332.960.0  |
| 27 002 698 0 | BiG Pack 890-1230 (from YOB 2009)             | 20.071.572.0 + 20.078.283.1 + 20.078.283.2 + 20.277.527.0    |
| 27 012 680 0 | Comprima (XC) - large radius, BiG Pack HDP II | 20.067.980.0 + 20.074.446.0 + 20.260.866.1                   |
| 938 939 0    | KR 130 S and KR 10-16 S                       | 275.995.1  |
| 938 978 0    | BiG Pack - "BiG Cut" cutting unit             | 282.356.0  |
| 940 057 0    | Round Pack, Vario Pack, Combi Pack, Fortima   | 277.761.0 + 279.349.0  |
| 940 017 0    | BiG Pack-"MultiCut" cutting unit              | 282.732.1  |
| 940 419 0    | BiG Pack VFS 890-12130, Comprima              | 285.777.0+287.808.0+20.061.114.0                             |
| 9400030      | XXL + 4XL + 5XL + Titan + ZX                  | 334.899.0+333.786.0+20.050.469.0+ 20.050.467.0+ 20.053.512.0 |
| 270011240    | Titan with 6 rocker arms from 2007 (short)    | 20.050.953.0   |
| 270011230    | Titan with 6 rocker arms from 2007 (long)     | 20.050.954.0   |
| 27 003 503 0 | AX+ MX (from YOB 2009)                        | 20.051.199.0 + 20.054.114.0 + 20.055.607.0 + 20.059.608.1    |
| 27 018 080 0 | ZX 430-560                                    | 20.059.607.1   |
| 20 277 125 0 | BiG Pack VC                                   | 20.273.379.1   |



# KRONE QuickChange

## Workshop accessories

- Quickest blade changing for KRONE disc mowers ActiveMow, EasyCut and the self-propelled mower-conditioner BiG M (BiG M II and up)
- Easy handling, fatigue-free working in a comfortable position
- Ideal for blades frequently changed

Exclusive from KRONE: The advantages of the QuickChange technology by compressed air are obvious: Blades are changed much faster than with the conventional solutions with blade-screw closure or blade-quick-action closure; blades are changed with minimal effort extremely easily and comfortably. The handy QuickChange tool reduces the set-up time and also facilitates a fatigue-free blade changing process in an ergonomic posture.

**Pneumatic tool  
for changing blades QuickChange**  
Order no.: 20 231 640 1





# KRONE PowerPack

## Workshop accessories

The KRONE PowerPack is a drive unit for the purpose of training, diagnostics, and commissioning of hitched machines. It has a hydraulic PTO drive, several control units with breakaway couplings in all common sizes, LS hydraulics, 12V/24V power supply and ISOBUS Connector and In-cab socket for connecting a terminal. A pressure gauge and volume flow meter are integrated for diagnostics. Power supply required: 400V/63A (optionally available as 32A version)

### Technical data:

- Electric drive power: 18.5 KW (in 63A version)
- Hydraulic pump: 45 ccm Load Sensing
- Specific hydr. output: 65 l/min
- Operating pressure: 210 bar
- Removable oil quantity: approx. 50 l
- PTO shaft profile: 1 3/8", Z=6
- No. of control units: 2 double-acting + 1 single-acting + 1 LS port (P / T / LS)
- External power supply: 1 x 12V + 1 x 24V banana sockets, individually selectable;  
2 x 12V 3-pin socket acc. to DIN 9680
- ISOBUS connector acc. to ISO11783 with InCab socket
- Swing-out terminal bracket

Order no.: 27 020 827 0









# Measuring adapter

Workshop accessories



## Measuring adapter circular plug M 12

Order no.: 20 083 507 1

5-pin and 8-pin, for checking terminal and CAN connections



## Measuring adapter Hirschmann cube plug

Order no.: 20 083 505 0

4-pin, for checking valves, pressure sensors and pressure switches



## Measuring adapter Deutsch plug

Order no.: 20 083 516 0

Rectangular 2-pin, 4-pin, 6-pin and 8-pin, triangular 3-pin, for checking valves, sensors and electric motors



## Measuring adapter TE plug 2-pin, 4-pin

Order no.: 20 083 509 0

Jet plug, 2-pin, 3-pin, AMP Superseal plug 2-pin, 3-pin and 4-pin, for checking sensors and valves



## Measuring adapter TE plug 42-pin

Order no.: 20 083 508 0

42-pin, for checking control units



## Bridging connector 2-pin

Order no.: 20 083 579 0

Socket/pin, 4mm





# Special tools

Workshop accessories



### Extractor OctoLink

Order no.: 20 141 260 0

Tool for dismantling the OctoLink coupling at the tedder



### External torx key

Order no.: 20 424 605 0

Tool for external torx screws to install Bosch traction drive pumps



### Expander rope

Order no.: 256 707 0



### Vacuum pump

Order no.: 20 012 091 0

To generate a vacuum with different liquids.



### Measurement panel hydraulics

Order no.: 229 685 2

Measuring panel with different gauges for measuring hydraulic pressures.



### Tool for mounting the springs for BiG Pack

Order no.: 20 275 225 0

Mounting the springs in the blade drawer.



### Tool for dismantling KS rotary rake arms

Order no.: 266 275 0

Tool for dismantling the rake arms



# Special tools

## Workshop accessories



### Test kit

#### CommonRail MAN, Liebherr

Order no.: 27 007 414 0

Test kit for measuring the injector return flow, for MAN and Liebherr engines



### Pressure test cooling water system

Order no.: 27 019 458 0

Universal pressure test kit for engine cooling systems. Particularly well suited for pressure tests on EGR coolers at MTU engines.



### Diagnostic unit MiniDiag

#### Mercedes

Order no.: 27 001 689 0

Diagnostic unit "MiniDiag" for the Mercedes engines OM460, OM502, OM926.



### Mounting tool for slotted nut

Order no.: 20 024 033 0

Tool for loosening the slotted nut on the main coupling of the harvester.



### Unlocking tool

#### Liebherr SCR system

Order no.: 27 023 334 0

Tool for unlocking the compressed air lines at the SCR pump module of Liebherr engines.



### Mounting tool (Mercedes)

Order no.: 27 002 634 0

Tool for mounting the heat protection sleeve on the injection nozzles (engines OM460, OM502, OM926).



### Mounting sleeve chopping drum bearing

Order no.: 27 001 679 0



### Mounting sleeve corn conditioner

Order no.: 27 001 669 0

For mounting the bearing.



### Mounting sleeve intake

Order no.: 27 001 670 0

For mounting the bearing.

### Mounting sleeve discharge accelerator BiG X

Order no.: 27 001 678 0

For mounting the bearing.





**Dismantling tool  
cylinder head Liebherr, MAN**

Order no.: 27 009 741 0

Torx nut for mounting the cylinder head screws at Liebherr and MAN engines



**Dismantling tool  
cylinder head Liebherr, MAN**

Order no.: 27 011 101 0

Adapter to 3/4" for mounting the cylinder head screws to Liebherr and MAN engines



**Adapter  
for measuring the compression MTU**

Order no.: 27 022 620 0

Injector dummy for measuring the compression at the MTU engines. Matches the commercially available compression pressure recorders.



**Setting  
the camshaft wheels MTU**

Order no.: 27 025 311 0

Template for setting the camshaft wheels at MTU engines.



**Setting the camshaft wheels MTU**

Order no.: 27 025 310 0

Mandrel for fixing the crankshaft for setting the camshaft at MTU engines.



**Dismantling tool  
injectors MTU**

Order no.: 27 022 638 0

Extractor for injectors of MTU engines



**Oil drain hose**

Order no.: 27 006 167 1

M26x1.5mm L=1500mm

**Dismantling tool  
injectors Liebherr**

Order no.: 27 023 531 0

Adapter for injectors of Liebherr engines

**Dismantling tool  
injectors Liebherr**

Order no.: 27 023 532 0

Slide hammer for injectors of Liebherr engines

**Dismantling tool for  
water protection sleeves**

Order no.: 27 023 419 0

Pronged wrench for dismantling the water protection sleeves in the cylinder head of MTU engines.



# Assortment kit

Workshop accessories

This case comprises a sufficient quantity of all necessary spare parts and special tools, such as crimping pliers, extractor tools etc. in different sizes and versions. This saves the operators many trips to the warehouse or workshop when doing the repair. Furthermore, there is no need for time-consuming orders of small parts such as seals, plugs or pipe sockets, because the kit includes different versions of these components.

This means: Huge time and money savings when remedying defects, also ideal for mobile applications / repairs (e.g. carrying in the service vehicle). Each accessory can be ordered separately to top up the kit.





### Assortment kit Molex

Order no.: 20 080 146 0

Applicable for: BiG X, BiG M

Contents:



| Order number | Designation                         | Number |
|--------------|-------------------------------------|--------|
| 00 303 575 0 | Crimping pliers for Mini Fit Molex  | 1      |
| 00 303 577 0 | Extraction tool, Mini Fit Jr.       | 1      |
| 20 080 098 0 | Crimping pliers, Molex Sabre        | 1      |
| 20 080 158 1 | Extraction tool, Sabre              | 1      |
| 00 303 590 0 | Crimping pliers, Molex Mini Fit Sr. | 1      |
| 00 303 681 0 | Extraction tool, Mini Fit Sr.       | 1      |
| 20 080 092 0 | Socket plug 24-pole, Mini Fit Jr.   | 3      |
| 20 080 091 0 | Socket plug 20-pole, Mini Fit Jr.   | 3      |
| 20 080 090 0 | Socket plug 18-pole, Mini Fit Jr.   | 3      |
| 20 080 089 0 | Socket plug 16-pole, Mini Fit Jr.   | 3      |
| 20 080 088 0 | Socket plug 14-pole, Mini Fit Jr.   | 3      |
| 00 302 781 0 | Socket plug 12-pole, Mini Fit Jr.   | 3      |
| 00 303 783 0 | Socket plug 10-pole, Mini Fit Jr.   | 3      |
| 00 302 780 0 | Socket plug 8-pole, Mini Fit Jr.    | 3      |
| 00 302 791 0 | Socket plug 6-pole, Mini Fit Jr.    | 3      |
| 20 080 145 0 | Socket plug 4-pole, Mini Fit Jr.    | 3      |
| 20 080 093 0 | Socket plug 4-pole, Sabre           | 3      |
| 20 080 094 0 | Socket plug 5-pole, Sabre           | 3      |
| 20 080 095 0 | Socket plug 6-pole, Sabre           | 3      |
| 00 302 779 0 | Socket plug 12-pole, Mini Fit Sr.   | 2      |
| 20 080 097 0 | Socket plug 10-pole, Mini Fit Sr.   | 2      |
| 00 302 778 0 | Socket plug 8-pole, Mini Fit Sr.    | 2      |
| 00 302 777 0 | Socket plug 6-pole, Mini Fit Sr.    | 2      |



# Assortment kit

Workshop accessories



## Assortment kit BOSCH

Order no.: 20 082 159 0

Applicable for: BiG X, BiG M 450

Contents:

| Order number | Designation  | Number |
|--------------|--|--------|
| 20 081 933 0 | Extraction tool insert, Matrix1.2/MQS                  | 1      |
| 20 081 371 0 | Extraction tool insert, BDK/BSK 2.8                    | 1      |
| 20 081 370 0 | Extraction tool insert, BMK 0.6                        | 1      |
| 20 081 369 0 | Crimping head BMK 0.6 0.35-0.75 mm <sup>2</sup>        | 1      |
| 20 081 368 0 | Crimping head BDK/BSK 2.8, 0.50 - 2.50 mm <sup>2</sup> | 1      |
| 20 081 932 0 | Crimping head matrix 1.2 0.35 - 0.50 mm <sup>2</sup>   | 1      |
| 20 081 931 0 | Crimping head matrix 1.2 0.75 - 1.00 mm <sup>2</sup>   | 1      |
| 20 082 144 0 | Crimping head matrix 1.2 1.5 mm <sup>2</sup>           | 1      |
| 20 081 528 0 | Crimping pliers handle                                 | 1      |
| 00 302 541 0 | Socket plug 16-pole, BDK Kod0 black                    | 1      |
| 20 081 324 0 | Socket plug 36-pole, BDK Kod0 black                    | 1      |
| 20 082 149 0 | Socket plug 16-pole, BDK Kod0 black                    | 1      |
| 20 082 150 0 | Socket plug 96-pole, BDK KodA black                    | 1      |
| 20 082 151 0 | Socket plug 89-pole, BDK Kod0 black                    | 1      |
| 20 082 152 0 | Socket plug 58-pole, BDK KodA black                    | 1      |





## Assortment kit Deutsch

Order no.: 20 080 150 2

Applicable for: BiG X, BiG M, BiG Pack, round balers, harvest transport wagon, rotary rake, EasyCut, Premos, Balecollect, bale wrappers

Contents:



| Order number | Designation   | Number |
|--------------|---|--------|
| 00 303 317 0 | Male connector 2-pole, DT, grey                     | 4      |
| 00 303 318 0 | Socket plug 2-pole, DT, grey                        | 4      |
| 20 082 511 0 | Male connector 3-pole, DT, grey                     | 4      |
| 20 082 512 0 | Socket plug 3-pole, DT, grey                        | 4      |
| 20 082 515 0 | Male connector 4-pole, DT, grey                     | 4      |
| 20 082 516 0 | Socket plug 4-pole, DT, grey                        | 4      |
| 20 082 519 0 | Male connector 6-pole, DT, grey                     | 4      |
| 20 082 522 0 | Socket plug 6-pole, DT, grey                        | 4      |
| 20 080 166 0 | Male connector 8-pole DT, KodA, grey                | 2      |
| 20 080 165 0 | Socket plug 8-pole, DT, KodA, grey                  | 2      |
| 20 080 753 0 | Male connector 12-pole DT, KodA, grey               | 2      |
| 20 080 778 0 | Socket plug 12-pole, DT, KodA, grey                 | 2      |
| 20 082 510 0 | Male connector 2-pole, DTM, grey                    | 2      |
| 20 081 975 0 | Socket plug 2-pole, DTM, grey                       | 2      |
| 20 082 513 0 | Male connector 12-pole, DTM, KodA, grey             | 2      |
| 20 080 779 0 | Socket plug 12-pole, DTM, KodA, grey                | 2      |
| 00 303 066 0 | Male connector 14-pole, HDP20, black                | 1      |
| 00 303 064 0 | Socket plug 14-pole, HDP20, black                   | 1      |
| 20 080 173 0 | Male connector 14-pole, HD30, silver                | 1      |
| 20 080 174 0 | Socket plug 14-pole, HD30, silver                   | 1      |
| 20 083 103 0 | Socket plug 14-pole, HDP20, black                   | 1      |
| 20 083 104 0 | Male connector 14-pole, HDP20, black                | 1      |
| 20 083 105 0 | Socket plug 14-pole, HDP20, black                   | 1      |
| 20 083 106 0 | Male connector 14-pole, HDP20, black                | 1      |
| 20 082 535 0 | Male connector 31-pole, HDP20, black                | 1      |
| 00 303 059 0 | Socket plug 31-pole, HDP20, black                   | 1      |
| 00 303 757 0 | Male connector 31-pole, HD30, silver                | 1      |
| 00 303 759 0 | Socket plug 31-pole, HD30, silver                   | 1      |
| 00 303 058 0 | Male connector 31-pole, HDP20, black                | 1      |
| 20 081 891 0 | Male connector 47-pole, HDP20, black                | 1      |
| 20 082 527 0 | Socket plug 47-pole, HDP20, black                   | 1      |
| 20 083 638 0 | Crimping head, size 12, 2.50 - 4.00 mm <sup>2</sup> | 1      |
| 20 083 639 0 | Crimping head, size 12, 4.00 - 6.00 mm <sup>2</sup> | 1      |
| 20 083 640 0 | Crimping head, size 16, 0.50 - 1.00 mm <sup>2</sup> | 1      |
| 20 083 641 0 | Crimping head, size 16, 1.00 - 2.50 mm <sup>2</sup> | 1      |
| 20 083 642 0 | Crimping head, size 20, 0.50 - 1.50 mm <sup>2</sup> | 1      |
| 20 083 643 0 | Crimping head, size 20, 1.00 - 2.50 mm <sup>2</sup> | 1      |
| 20 083 645 0 | Extraction tool insert, size 16                     | 1      |
| 20 083 646 0 | Extraction tool insert, size 12                     | 1      |
| 20 083 647 0 | Extraction tool insert, size 20                     | 1      |
| 00 303 267 0 | Extraction tool, size 20                            | 3      |
| 00 303 055 0 | Extraction tool, size 16                            | 3      |
| 20 083 728 0 | Extraction tool, size 12                            | 3      |
| 20 085 062 0 | Extraction tool insert, size 16                     | 1      |



# Assortment kit

## Workshop accessories

### Assortment kit Lear

Order no.: 20 084 226 1

Applicable for: BiG X (from BiG X 700-1100 till current series), BiG M (from BiG M 420, 500 till current series)

Contents:



| Order number | Designation  | Number |
|--------------|--|--------|
| 20 081 320 0 | Plug (socket and pin contact variably usable) 2-pole MKR/Splus KodB, black | 2      |
| 20 081 321 0 | Plug (socket and pin contact variably usable) 2-pole MKR/Splus KodA, grey  | 2      |
| 20 081 343 0 | Socket plug 16-pole, MAK15, blue   | 2      |
| 20 081 350 0 | Socket plug 21-pole, AFK-plus Kod1, grey                                   | 2      |
| 20 082 672 0 | Socket plug 4-pole, MRK/Splus, Kod0, black                                 | 2      |
| 20 082 888 0 | Socket plug 8-pole, DFK1+2, red  | 2      |
| 20 082 889 0 | Socket plug 8-pole, DFK1+2, black  | 2      |
| 20 082 890 0 | Socket plug 12-pole, DFK1+2, yellow  | 2      |
| 20 082 891 0 | Socket plug 12-pole, DFK1+2, red   | 2      |
| 20 082 892 0 | Socket plug 12-pole, DFK1+2, black   | 2      |
| 20 084 227 0 | Crimping head, DFK3 0.50-2.50 mm <sup>2</sup>                              | 1      |
| 20 084 228 0 | Crimping head, DFK3 4.00-6.00 mm <sup>2</sup>                              | 1      |
| 20 084 229 0 | Crimping head, MKR-plus, 0.50-2.50 mm <sup>2</sup>                         | 1      |
| 20 081 390 0 | Crimping head, AFK/AFS 2.8plus, 0.20-2.5 0mm <sup>2</sup>                  | 1      |
| 20 081 392 0 | Crimping head MAK15 0.20 - 1.00 mm <sup>2</sup>                            | 1      |
| 20 081 388 0 | Extraction tool insert, AFK/AFS 2.8plus                                    | 1      |
| 20 081 572 0 | Extraction tool insert, MKR/MKSplus  | 1      |
| 20 081 387 0 | Extraction tool insert, MAK15  | 1      |
| 20 081 528 0 | Crimping pliers handle   | 1      |
| 20 081 529 0 | Handle for extraction tool   | 1      |

### Assortment kit TE Connectivity

Order no.: 20 080 149 1

Applicable for: BiG X, BiG M, BiG Pack, round balers, harvest transport wagon, rotary rake, EasyCut, Premos, BaleCollect, bale wrappers

Contents:



| Order number | Designation  | Number |
|--------------|--|--------|
| 20 080 333 0 | Socket plug 2-pole, JPT Kod2 black                           | 3      |
| 00 303 000 0 | Socket plug 2-pole, Superseal 1.5, black                     | 4      |
| 00 303 003 0 | Male connector 2-pole, Superseal 1.5, black                  | 4      |
| 00 303 001 0 | Socket plug 3-pole, Superseal 1.5, black                     | 3      |
| 00 303 004 0 | Male connector 3-pole, Superseal 1.5, black                  | 3      |
| 00 303 117 0 | Socket plug 4-pole, 2.5 mm sys. Kod1, black                  | 2      |
| 00 303 002 0 | Socket plug 4-pole, Superseal 1.5, black                     | 3      |
| 00 303 005 0 | Male connector 4-pole, Superseal 1.5, black                  | 3      |
| 00 303 078 0 | Socket plug 6-pole, JPT KodA1, black                         | 2      |
| 00 303 086 0 | Male connector 6-pole, JPT, KodA1, black                     | 2      |
| 20 080 189 0 | Socket plug 7-pole, 1.5 mm sys. , KodA, black                | 1      |
| 20 082 747 0 | Male connector 9-pole, CPC, KodA, black                      | 1      |
| 00 303 070 0 | Socket plug 10-pole, JPT, KodA1, black                       | 2      |
| 00 303 071 0 | Male connector 10-pole, JPT, KodA1, black                    | 2      |
| 20 080 176 0 | Socket plug 12-pole, JPT, KodA, green                        | 2      |
| 20 080 178 0 | Socket plug 15-pole, JPT, KodA, purple                       | 2      |
| 00 303 079 0 | Socket plug 16-pole, JPT, KodA1, black                       | 2      |
| 20 080 180 0 | Male connector 18-pole, JPT, KodA, grey                      | 2      |
| 20 080 182 0 | Male connector 21-pole, JPT, KodA, brown                     | 2      |
| 20 083 673 0 | Socket plug 26-pole, Superseal 1.0, Kod1, black              | 1      |
| 00 303 239 0 | Socket plug 42-pole, JPT, KodA1, black                       | 2      |
| 20 081 766 0 | Male connector 42-pole, JPT, KodB1, grey                     | 2      |
| 20 081 774 0 | Socket plug 81-pole, MQS/JPT, KodB, black                    | 2      |
| 20 081 528 0 | Crimping pliers handle                                       | 1      |
| 20 084 942 0 | Crimping head Superseal, 1.5 0.35-1.50 mm <sup>2</sup>       | 1      |
| 20 084 943 0 | Crimping head, JPT/MCP2.8 bushing, 0.20-2.50 mm <sup>2</sup> | 1      |
| 20 082 199 0 | Crimping head, MT2, 0.20-1.00 mm <sup>2</sup>                | 1      |
| 20 084 944 0 | Crimping head, 1.5/2.5 mm sys., 0.50-2.50 mm <sup>2</sup>    | 1      |
| 20 084 945 0 | Crimping head, type III+ 0.03-0.56 mm <sup>2</sup>           | 1      |
| 20 084 946 0 | Crimping head, type III+ 0.75-2.50 mm <sup>2</sup>           | 1      |
| 20 084 947 0 | Crimping head, JPT 0.50-2.50 mm <sup>2</sup>                 | 1      |
| 20 084 948 0 | Crimping head, MQS 0.08-0.75 mm <sup>2</sup>                 | 1      |
| 20 084 949 0 | Crimping head, Superseal 1.0 0.50-1.25 mm <sup>2</sup>       | 1      |
| 20 081 529 0 | Handle for extraction tool                                   | 1      |
| 20 084 950 0 | Extraction tool insert, Superseal 1.5                        | 1      |
| 20 084 951 0 | Extraction tool insert, JPT/MCP2.8                           | 1      |
| 20 084 952 0 | Extraction tool insert, MT2                                  | 1      |
| 20 084 953 0 | Extraction tool insert, 1.5 mm sys.                          | 1      |
| 20 084 954 0 | Extraction tool insert, 2.5 mm sys.                          | 1      |
| 20 084 955 0 | Extraction tool insert, Superseal 1.0                        | 1      |
| 20 081 933 0 | Extraction tool insert, Matrix1.2/MQS                        | 1      |
| 20 084 956 0 | Extraction tool insert, type III+                            | 1      |
| 20 085 061 0 | Extraction tool insert, Superseal 1.5                        | 1      |





# Assortment kit

Workshop accessories

## Assortment kit hydraulic screw connections

Order no.: 27 001 105 0

Applicable for: all machines

Contents:



| Order number | Designation                    | Number |
|--------------|--------------------------------|--------|
| 90 000 168 0 | O-ring seal 4 x 1.5            | 10     |
| 00 921 045 1 | Cutting ring, L 6 mm           | 10     |
| 00 921 039 1 | Union nut, series L 6 mm       | 10     |
| 27 001 218 0 | Seal ring for cutting ring L6  | 10     |
| 90 000 169 0 | O-ring seal 6 x 1.5            | 10     |
| 00 919 961 0 | Cutting ring, L 8 mm           | 10     |
| 00 919 962 0 | Union nut, series L 8 mm       | 10     |
| 27 001 219 0 | Seal ring for cutting ring L8  | 10     |
| 90 000 170 0 | O-ring seal 9 x 1.5            | 10     |
| 27 001 220 0 | Seal ring for cutting ring L12 | 10     |
| 00 921 046 1 | Cutting ring L 12 mm           | 10     |
| 00 921 206 0 | Union nut, series L 12 mm      | 10     |
| 90 000 100 0 | O-ring seal 12 x 2             | 10     |
| 00 921 047 1 | Cutting ring L 15 mm           | 10     |
| 00 921 043 0 | Union nut, series L 15 mm      | 10     |
| 27 001 221 0 | Seal ring for cutting ring L15 | 10     |
| 00 937 522 0 | O-ring seal 26 x 2             | 10     |
| 00 919 749 0 | Cutting ring L 28 mm           | 2      |
| 00 920 805 0 | Union nut, series L 28 mm      | 2      |
| 27 001 223 0 | Seal ring for cutting ring L28 | 10     |
| 90 000 171 0 | O-ring seal 16.3 x 2.4         | 10     |
| 00 920 809 0 | Cutting ring S 20 mm           | 4      |
| 00 920 803 0 | Union nut, series S 20 mm      | 4      |
| 27 001 225 0 | Seal ring for cutting ring S20 | 10     |
| 00 945 089 0 | O-ring seal 20.3 x 2.4         | 10     |
| 00 945 084 0 | O-ring seal 15 x 2             | 10     |
| 00 921 183 1 | Cutting ring L 18 mm           | 10     |
| 00 921 182 0 | Union nut, series L 18 mm      | 10     |
| 27 001 222 0 | Seal ring for cutting ring L18 | 10     |
| 00 937 518 0 | O-ring seal 20 x 2             | 10     |
| 90 000 173 0 | O-ring seal 32 x 2             | 10     |
| 00 919 750 0 | Cutting ring L 35 mm           | 2      |
| 00 920 806 0 | Union nut, series L 35 mm      | 2      |
| 27 001 224 0 | Seal ring for cutting ring L35 | 10     |
| 90 000 172 0 | O-ring seal 25.3 x 2.4         | 10     |
| 00 921 225 0 | Angle bracket L6               | 1      |
| 00 919 965 0 | Angle bracket L8               | 1      |
| 00 921 067 1 | Angle bracket L12              | 1      |
| 00 919 999 0 | Angle bracket L15              | 1      |
| 00 921 173 0 | Angle bracket L18              | 1      |
| 00 919 711 0 | Angle bracket L22              | 1      |
| 00 920 822 0 | Angle bracket L28              | 1      |
| 00 920 823 0 | Angle bracket L35              | 1      |
| 00 920 825 0 | Angle bracket S 12             | 1      |
| 00 920 826 0 | Angle bracket S 20             | 1      |
| 00 920 873 0 | Angle bracket S 25             | 1      |
| 00 919 904 0 | Angle bracket S 30             | 1      |
| 27 001 217 0 | Thread gauge metric/Whitworth  | 1      |

### Assortment kit sensors trailed machines

Order no.: 20 080 431 0

Applicable for: BiG Pack, round balers, forage and discharge wagons, rotary rakes, mowers



Contents:

| Order number | Designation                               | Number |
|--------------|---|--------|
| 00 302 164 4 | Ind. proximity switch Namur M12 4 mm      | 2      |
| 00 302 166 2 | Magnetic proximity switch Namur M12 18 mm | 2      |
| 00 302 167 0 | Angle sensor potentiometric 95°           | 1      |
| 00 302 321 2 | Ind. proximity switch Namur M18 8 mm      | 2      |
| 00 302 409 2 | Ind. proximity switch Namur M12 6 mm      | 2      |
| 00 303 469 1 | Ind. proximity switch Namur M30 10 mm     | 2      |
| 00 303 518 1 | Angle sensor inductive 360° 0.5-4.5 V     | 1      |
| 00 303 545 0 | Force sensor DA 54 with glue kit          | 1      |
| 00 303 732 0 | Angle sensor Hall -60 - 60° 1-5 V         | 2      |
| 00 303 747 1 | Ind. proximity switch Namur M8 1.5 mm     | 1      |
| 00 302 216 1 | Magnetic proximity switch Reed M12 10 mm  | 1      |
| 00 302 295 1 | Magnetic proximity switch Namur M12 18 mm | 1      |
| 00 302 448 0 | Ind. proximity switch Namur M12 2 mm      | 1      |
| 00 303 455 0 | Transmitter system 4.8 mm                 | 1      |

### Assortment kit hydraulic seals

Order no.: 27 001 106 0

Applicable for: all machines



Contents:

| Order number | Designation             | Number |
|--------------|-------------------------|--------|
| 90 000 151 0 | Seal ring 8.1x1.6       | 10     |
| 90 000 152 0 | Seal ring 9.3x2.2       | 10     |
| 90 000 153 0 | Seal ring 11.3x2.2      | 10     |
| 90 000 154 0 | Seal ring 13.3x2.2      | 10     |
| 90 000 155 0 | Seal ring 15.3x2.2      | 10     |
| 90 000 156 0 | Seal ring 19.3x2.2      | 10     |
| 90 000 157 0 | Seal ring 23.5x2.6      | 10     |
| 90 000 158 0 | Seal ring 23.6x2.9      | 10     |
| 90 000 159 0 | Seal ring 29.6x2.9      | 10     |
| 90 000 160 0 | Seal ring 38.6x2.9      | 10     |
| 90 000 161 0 | O-ring seal 8.92 x 1.83 | 10     |
| 90 000 162 0 | O-ring seal 11.89x1.98  | 10     |
| 90 000 099 0 | O-ring seal 16.36x2.2   | 10     |
| 90 000 099 0 | O-ring seal 16.36x2.2   | 10     |
| 90 000 163 0 | O-ring seal 19.18x2.46  | 10     |
| 90 000 164 0 | O-ring seal 23.47x2.95  | 10     |
| 90 000 165 0 | O-ring seal 29.47x2.95  | 10     |
| 00 937 549 0 | O-ring seal 18.66x3.53  | 10     |
| 00 937 646 0 | O-ring seal 37.7x3.53   | 10     |
| 00 937 647 0 | O-ring seal 47.22x3.53  | 10     |
| 90 000 166 0 | O-ring seal 15.88x2.62  | 10     |
| 00 937 515 0 | O-ring seal 16x2.5      | 10     |
| 00 937 629 0 | O-ring seal 20x2.5      | 10     |
| 90 000 167 0 | O-ring seal 24x2.5      | 10     |
| 00 937 628 0 | O-ring seal 26x2.5      | 10     |
| 27 000 988 0 | O-ring seal 32x2.5      | 10     |



# Assortment kit

## Workshop accessories

### Assortment kit general

Order no.: 20 080 212 0

Applicable for: BiG X, BiG M, BiG Pack, round balers, forage and discharge wagons, rotary rakes

#### Contents:



| Order number | Designation                                | Number |
|--------------|--|--------|
| 00 303 412 0 | Socket plug 4-pole, GDM, KodA, black       | 2      |
| 00 301 802 0 | Socket plug 4-pole, GDM, KodA, black       | 2      |
| 00 301 987 0 | Socket plug 3-pole, GDM, transparent       | 2      |
| 00 301 988 0 | Socket plug 3-pole, GDM, KodB, transparent | 2      |
| 00 302 005 0 | Male connector 3-pole, GSP, KodA, black    | 2      |
| 00 303 946 0 | Socket plug 3-pole, Weather P., black      | 2      |
| 00 303 947 0 | Male connector 3-pole, Weather P., black   | 2      |
| 00 303 238 0 | TCS plug 55-pole, cpl. with contacts       | 1      |
| 00 302 646 0 | Socket plug 14-pole, PT, black             | 1      |
| 00 302 645 0 | Socket plug 56-pole, I/O system KPL, black | 1      |
| 00 302 541 0 | Socket plug 16-pole, BDK Kod0, black       | 1      |
| 00 302 369 0 | Socket plug 4-pole, CA, black              | 1      |
| 20 080 198 0 | Blind cap pin, 692/693, black              | 1      |
| 00 302 368 0 | Male connector 4-pole, CA, black           | 1      |
| 00 302 051 0 | Blind cap sleeve 692/693, black            | 2      |
| 20 080 197 0 | Blind cap sleeve 692/693, black            | 1      |
| 00 302 048 1 | Male connector 7-pole, CA, black           | 1      |
| 00 302 093 0 | Blind cap pin, 692/693, black              | 1      |
| 00 302 366 0 | Socket plug 7-pole, CA, black              | 1      |
| 00 302 367 0 | Male connector 7-pole, CA, black           | 1      |
| 00 305 045 0 | Socket plug 7-pole, C16+1, black           | 1      |
| 20 080 207 0 | Male connector 4-pole, RSV1.6B, grey       | 2      |
| 20 080 208 0 | Male connector 6-pole, RSV1.6B, grey       | 2      |
| 20 080 209 0 | Male connector 9-pole, RSV1.6B, grey       | 2      |
| 20 080 210 0 | Male connector 12-pole, RSV1.6B, grey      | 2      |
| 20 080 211 0 | Male connector 18-pole, RSV1.6B, grey      | 2      |
| 00 302 285 0 | Socket plug 2-pole, socket bar, orange     | 2      |
| 00 302 286 0 | Socket plug 3-pole, socket bar, orange     | 2      |
| 00 305 013 0 | Socket plug 2-pole, jet plug Kod1, black   | 2      |
| 00 303 029 0 | Socket plug 3-pole, jet plug Kod1, black   | 2      |



### Assortment kit sensor self-propelled machines

Order no.: 20 080 415 1

Applicable for: BiG X, BiG M

#### Contents:



| Order number | Designation  | Number |
|--------------|--|--------|
| 00 302 897 0 | Inductive proximity switch NPN M12 4 mm                | 1      |
| 00 302 029 2 | Pressure sensor 0.000-130.000 bar analogue             | 1      |
| 00 302 409 2 | Ind. proximity switch Namur M12, 6 mm                  | 1      |
| 00 302 448 0 | Ind. proximity switch Namur M12, 2 mm                  | 1      |
| 00 302 473 1 | Pressure sensor 0.00-500.00 bar analogue               | 1      |
| 00 303 146 0 | Angle sensor Hall -35 - 35° 1-5 V                      | 1      |
| 00 303 164 0 | Angle sensor Hall -36 - 36° 0.25...0.75xU <sub>b</sub> | 1      |
| 20 080 435 0 | Angle sensor Hall -41 - 41° 0.25...0.75xU <sub>b</sub> | 1      |
| 00 302 647 0 | Pressure sensor 0.000 - 250.000 bar analogue           | 1      |
| 00 303 450 0 | Temperature switch 95° make contact                    | 1      |
| 00 302 530 1 | Pressure sensor 0.00-200.00 bar analogue               | 1      |
| 00 302 023 0 | Pressure switch 70 bar changer                         | 1      |
| 00 919 938 0 | Speed sensor for 90M KPPF 156                          | 1      |
| 00 302 164 4 | Ind. proximity switch Namur M12 4 mm                   | 1      |
| 00 303 687 0 | Angle sensor Hall -36 - 36° 0.25...0.75xU <sub>b</sub> | 1      |
| 00 302 189 1 | Pressure switch 10 bar changer                         | 1      |
| 00 919 679 1 | Angle sensor hall 40° 0.5 - 4.5 V                      | 1      |
| 20 081 630 0 | Ind. proximity switch Namur M12, 6 mm                  | 1      |
| 00 229 710 0 | Pressure switch 2 bar make contact                     | 1      |
| 27 001 627 0 | Angle sensor Hall -25 - 25° 0.5 - 4.5 V                | 1      |
| 20 081 687 1 | Speed sensor, Hall 20 kHz                              | 1      |
| 27 007 762 0 | High-performance reed switch                           | 1      |
| 00 303 469 1 | Ind. proximity switch Namur M30, 10 mm                 | 1      |
| 00 302 321 2 | Ind. proximity switch Namur M18, 8 mm                  | 1      |
| 20 081 500 0 | Angle sensor Hall -60 - 60° 4-20mA                     | 1      |
| 20 080 434 0 | Pump potentiometer pin contact                         | 1      |
| 27 011 994 0 | Sensor key BI 4  | 2      |
| 20 083 386 0 | Speed sensor NPN 0.002 - 6.000 kHz                     | 1      |
| 00 302 024 0 | Filling level switch water 20 mm S                     | 1      |
| 00 940 109 1 | Pressure switch 20 bar make contact                    | 1      |
| 20 081 126 1 | Filling level sensor water 4 mm S                      | 1      |
| 27 007 142 0 | Speed sensor NPN 15 kHz                                | 1      |
| 00 940 221 0 | Pressure switch 0.05 bar make contact                  | 1      |
| 27 013 759 1 | Pressure sensor 0.00-600.00 bar analogue               | 1      |
| 27 010 303 0 | Angle sensor Hall 58°                                  | 1      |
| 20 081 688 1 | Pressure switch 22 bar make contact                    | 1      |
| 27 009 854 0 | Pressure switch 70 bar changer                         | 1      |



# Assortment kit

Workshop accessories

## Spare part kit central lubrication BekaMax

Order no.: 27 011 366 0

Applicable for: BiG X, BiG M and all machines with central lubrication of BekaMax (screw connections)

Contents:



| Order number | Designation                               | Number |
|--------------|---|--------|
| 00 920 921 1 | Elbow union LL 6 / M8x1conical            | 10     |
| 27 011 492 0 | Screw-in connector LL 6 / M8x1k A3G       | 10     |
| 00 938 650 0 | Angle screw-in connection (6-pipe) M10x1k | 2      |
| 27 012 072 0 | Swivel joint 6LL M8x1k                    | 10     |
| 27 000 896 0 | Elbow M8x1 conical                        | 10     |
| 27 001 282 0 | Pipe connector, Ø6 mm                     | 20     |
| 00 940 327 0 | Screw sleeve for high-pressure hose       | 20     |
| 00 940 328 0 | Straight pipe socket, 30 mm               | 10     |
| 27 008 335 0 | Straight pipe socket, 24 mm               | 5      |
| 27 011 503 0 | Pipe connector 90° L38                    | 5      |
| 27 011 504 0 | Pipe connector 90° L21                    | 5      |
| 27 011 502 0 | Pipe connector 45°                        | 2      |
| 27 006 844 0 | Angle element 45° M6x1 conical / M8x1     | 2      |
| 00 940 097 0 | Screw-in nipple M8x1k                     | 2      |
| 00 944 941 0 | Connector with conical thread, 17.5 mm    | 10     |
| 27 008 329 0 | Extension M8x1k - 35 mm                   | 5      |
| 27 008 343 0 | Filler plug for plug connector            | 10     |
| 00 900 211 0 | Hexagon head screw M5 x 10 A3G            | 10     |
| 00 938 651 0 | Straight screw-in connection (6-pipe)     | 2      |
| 00 940 334 0 | Angle screw-in connection LL M6 conical   | 5      |
| 00 938 644 0 | Union screw M10                           | 5      |
| 00 938 645 0 | Double bevel ring DKR 6                   | 5      |
| 00 920 905 0 | Union nut, series LL 6 mm                 | 5      |
| 00 920 913 0 | Non-return valve 3/8" BSPP                | 5      |
| 27 011 499 0 | Swivel joint screw connection M8x1k       | 2      |
| 27 011 595 0 | Swivel joint screw connection             | 2      |

### Spare part kit BiG Pack knotter kit

Order no.: 28 700 169 1

Applicable for: BiG Pack types with double knotter



#### Contents:

| Order number | Designation                     | Number |
|--------------|---------------------------------|--------|
| 313 55       | Tension spring, 4 x 32 x 147    | 1      |
| 180 641 3    | Tension spring 3 x 23 x 133     | 2      |
| 281 753 3    | Spring 2.8 x 17.2 x 71.3        | 1      |
| 282 361 1    | Spring 2.8 x 17.2 x 91          | 1      |
| 286 183 1    | Tension spring 3.5 x 22.5 x 170 | 1      |
| 301 554 0    | Relay changer 30 A              | 1      |
| 910 803 0    | Disc 12 x 18 x 1                | 3      |
| 910 804 0    | Shim ring 15 x 21 x 0.3         | 10     |
| 910 805 0    | Shim ring 15 x 21 x 0.5         | 10     |
| 910 806 1    | Shim ring 15 x 21 x 1.0         | 5      |
| 911 512 0    | Retaining ring 14 x 1.0         | 2      |
| 911 513 0    | Retaining ring 15 x 1.0         | 2      |
| 911 517 0    | Retaining ring 19 x 1.2         | 2      |
| 912 411 0    | Spiral roll pin 5 x 22          | 10     |
| 912 557 0    | Spiral roll pin 5 x 30          | 10     |
| 913 100 0    | Slotted pin 9 x 26              | 1      |
| 920 905 0    | Union nut, L6                   | 2      |
| 920 916 0    | 2-cutting ring LL6              | 3      |
| 921 049 1    | Straight screw connection L 6   | 1      |
| 954 505 0    | Roll                            | 1      |
| 954 506 0    | Disc 20 x 25 x 0.2              | 6      |
| 954 507 0    | Disc 20 x 25 x 0.5              | 6      |
| 954 509 0    | Spring for make contact         | 2      |
| 954 511 0    | Auger gear                      | 1      |
| 954 513 0    | Auger shaft                     | 1      |
| 954 514 0    | Cleaner                         | 2      |
| 954 538 0    | Blade lever cpl.                | 2      |
| 954 539 0    | Twine blade                     | 1      |
| 954 542 0    | Driver double knotter           | 1      |
| 954 543 1    | Bevel gear for tappet drive     | 3      |
| 954 544 0    | Twine retainer                  | 6      |
| 954 547 1    | Billhook cpl.                   | 2      |
| 954 549 0    | Cylinder pin                    | 10     |
| 954 592 0    | Twine holder spring             | 6      |
| 20 070 610 4 | Twine pusher cpl.               | 2      |
| 20 073 181 0 | Running-down part               | 1      |
| 20 073 182 0 | Tension spring 4 x 31.5 x 220   | 1      |
| 20 079 189 0 | Tension spring 2.5x18x84        | 1      |
| 27 000 060 0 | Hook pinion                     | 3      |
| 27 000 061 0 | Needle roll                     | 2      |
| 27 000 523 1 | Tension spring, 192 long        | 1      |
| 27 001 285 0 | L screw-in connection           | 2      |
| 27 001 318 0 | Billhook tongue cpl.            | 6      |
| 90 000 142 0 | Joint head 12 x 16 M12          | 2      |
| 90 002 519 0 | Pin 6 x 12                      | 1      |





# Assortment kit

Workshop accessories

## Spare part kit for plug-in coupling

Order no.: 27 000 244 0

Applicable for: BiG X, BiG M, central lubrication and all machines with Vogel central lubrication



Contents:

| Order number | Designation                                   | Number |
|--------------|---|--------|
| 27 000 901 0 | Pipe socket, 20 lg for Ø6                     | 20     |
| 27 000 903 0 | Pipe socket, 90° for Ø6                       | 10     |
| 27 000 900 0 | Screw sleeve                                  | 20     |
| 27 000 902 0 | Pipe socket, 30 lg for Ø6                     | 20     |
| 27 000 898 0 | Protective cap for plug connector, Ø6         | 20     |
| 27 000 897 0 | Elbow for Ø6 M10x1 conical                    | 10     |
| 27 000 896 0 | Elbow for Ø6 M8x1, conical                    | 10     |
| 27 000 899 0 | Pipe connector Ø6 mm (detachable)             | 10     |
| 27 000 895 0 | Swivelling screw-fitting for Ø6 M8x1, conical | 10     |
| 27 000 892 0 | Plug connector for Ø6 M6                      | 10     |
| 27 000 893 0 | Plug connector for Ø6 M8x1, conical           | 10     |
| 27 000 894 0 | Plug connector for Ø6 M10x1, conical          | 10     |

## Assortment kit central lubrication oil

Order no.: 27 006 955 0

Applicable for: round balers



Contents:

| Order number | Designation                    | Number |
|--------------|--------------------------------|--------|
| 00 938 518 0 | Oil pump (central lubrication) | 1      |
| 00 938 521 0 | Nozzle cpl., MM1 5/16"         | 5      |
| 00 938 522 0 | Nozzle cpl., MM2 5/16"         | 5      |
| 00 938 523 0 | Nozzle cpl., MM3 5/16"         | 5      |
| 00 938 524 0 | Nozzle cpl., MM4 5/16"         | 5      |
| 00 938 525 0 | Nozzle cpl., MM5 5/16"         | 5      |
| 00 938 526 0 | Nozzle cpl., MM6 5/16"         | 5      |
| 00 938 527 0 | Nozzle cpl., MM7 5/16"         | 5      |
| 00 938 528 0 | Nozzle cpl., MM8 5/16"         | 5      |
| 00 938 529 0 | Nozzle cpl., MM9 5/16"         | 5      |
| 00 938 535 0 | Angular connector UNF 5/16"    | 5      |
| 00 938 534 0 | End brush cpl.                 | 6      |

### Spare part kit central lubrication BekaMax

Order no.: 27 008 327 1

Applicable for: BiG X, BiG M and all machines with central lubrication of BekaMax (plug connections)

#### Contents:



| Order number | Designation                            | Number |
|--------------|--|--------|
| 27 008 331 0 | Angular plug connector M8x1            | 10     |
| 27 008 333 0 | Straight plug connector M8x1k          | 10     |
| 27 008 332 0 | Angular plug connector M10x1           | 2      |
| 27 008 334 0 | Swivel-joint plug connector M8x1k      | 10     |
| 27 007 809 0 | Angular screw connection M8x1-M8x1K    | 10     |
| 27 000 898 0 | Dust protection cap for plug connector | 20     |
| 27 001 282 0 | Pipe connector                         | 20     |
| 00 940 327 0 | Screw sleeve                           | 20     |
| 00 940 328 0 | Straight pipe socket, 30 mm            | 10     |
| 27 008 335 0 | Straight pipe socket, 24 mm            | 5      |
| 27 008 337 0 | Pipe socket for plug connector, 30 mm  | 5      |
| 27 008 336 0 | Pipe socket for plug connector, 24 mm  | 5      |
| 27 008 338 0 | Pipe socket for plug connector, 90°    | 5      |
| 27 008 339 0 | Pipe socket for plug connector, 45°    | 2      |
| 27 006 844 0 | Corner bracket, 45° M6k                | 2      |
| 00 940 097 0 | Corner bracket, 45° M8x1k              | 2      |
| 27 008 452 0 | Corner bracket, 90° M8x1k              | 2      |
| 00 944 941 0 | Extension M8x1k 17.5 mm long           | 10     |
| 27 008 329 0 | Extension M8x1k 35 mm long             | 5      |
| 27 008 343 0 | Filler plug for plug connector         | 10     |
| 00 900 211 0 | Thread grooving screw M5x10            | 10     |
| 27 008 341 0 | Straight plug connector M10x1k         | 2      |
| 27 007 011 0 | Angular plug connector M6k             | 5      |
| 00 938 644 0 | Union screws                           | 5      |
| 00 938 645 0 | Double bevel ring                      | 5      |
| 00 920 905 0 | union nut                              | 5      |
| 27 008 346 0 | Cutting ring                           | 5      |



## Cabin accessories

For your convenience: Please see below for useful cabin accessories for optimum comfort in your working life. In addition to a functional basic equipment, such as for example rear-view mirrors or wipers, a comfortable and high-quality driver's seat is also very important.



### Driver's seat

Order no.: 27 006 581 0

12 V

### Comfort seat

Order no.: 27 010 234 0

12 V

### Driver's seat

Order no.: 27 011 836 0

24 V

### Comfort seat

Order no.: 27 011 837 0

24 V



### Cooling box

Order no.: 27 005 718 0

12 V, thermoelectric, foam core insulation, with handle and 12V plug, headroom for 1.5 L bottles, dimensions: 34.5 x 22.5 x 42.5 cm, weight: 3.5 kg, capacity approx. 14 l



### Rack

Order no.: 20 026 311 0

366 x 160 mm, black

For storing operating manuals, brochures etc.





**Rear blind**  
Order no.: 20 220 374 0  
Sun blind, width approx. 45 cm, can  
be extended up to approx. 80 cm





# Cabin accessories



**Motor vehicle radio for BiG X/BiG M**

**Motor vehicle radio 24 V:**

Order no.: 20 086 491 0

Machine type: BiG X 480 - 630

**Motor vehicle radio 12 V:**

Order no.: 20 086 490 0

Machine type: BiG X 700-1100, 700/I-1100/I, 700-2 - 1100-2, 700-3 - 1100-3, 750C, BiG M 420, BiG M 500



**Loudspeaker**

Order no.: 220 397 0

85 dB, 40 W



**Mounting frame for motor vehicle radio**

Order no.: 220 437 0

Standard mounting frame for motor vehicle radio



**Interior lamp/reading lamp**

Order no.: 27 006 263 0

12 V / 24 V, flat plug 6.3 cm, with or without reading light



**Interior lamp LED**

Order no.: 20 082 401 1

12 V



**Wiper blade 450 mm**

Order no.: 20 027 480 0

**Wiper blade 500 mm**

Order no.: 220 604 0

**Wiper blade 1200 mm**

Order no.: 220 413 0

**Wiper arm 450 mm**

Order no.: 220 603 0



**Rear-view mirror**

Order no.: 20 081 827 0  
electr. adjustable, right side, 24 V

**Rear-view mirror**

Order no.: 20 082 944 0  
electr. adjustable, left side, 24 V

**Rear-view mirror**

Order no.: 27 001 177 0  
electr. adjustable, right side, 12 V

**Rear-view mirror**

Order no.: 27 001 178 0  
electr. adjustable, left side, 12 V



**Rear-view mirror**

Order no.: 938 504 0  
Standard, manual adjustment

**Inside rear-view mirror**

Order no.: 220 442 0  
229 x 98 x 30 cm



**Wide-angle mirror**

Order no.: 27 001 176 0  
12 V, electrically adjustable



**Wide-angle mirror**

Order no.: 20 082 946 0  
24 V, electronically adjustable



**Video system**

Order no.: 20 081 017 0  
Video system with screen, camera and accessories



**Camera system for trailed machines**

Order no.: 20 084 697 0  
Video system with screen,  
camera and accessories





# Paints and oils

Get our spray paints and varnishes to have the original KRONE green and beige for repairing your KRONE machines or matching the colours of your assembly parts. Highest quality at the best price.

## KRONE varnishes

| Order number | Designation                         | Size   |
|--------------|-------------------------------------|--------|
| 939 004 1    | Varnish (KRONE green)               | 750 ml |
| 939 502 0    | Varnish (KRONE green)               | 2.5 l  |
| 939 006 0    | Varnish (KRONE beige)               | 750 ml |
| 939 001 0    | Varnish (KRONE red)                 | 750 ml |
| 939 003 0    | Varnish (KRONE brown)               | 750 ml |
| 27 012 834 0 | Varnish (KRONE anthracite, shining) | 750 ml |
| 27 014 966 0 | Varnish (KRONE anthracite, matt)    | 750 ml |



## Paints and oils

| Order number | Designation                    | Size   |
|--------------|--------------------------------|--------|
| 27 020 400 0 | Spray paint (KRONE green)      | 150 ml |
| 27 020 401 0 | Spray paint (KRONE green)      | 400 ml |
| 27 020 402 0 | Spray paint (KRONE beige)      | 150 ml |
| 27 020 445 0 | Spray paint (KRONE rim silver) | 150 ml |
| 940 228 0    | Primer                         | 500 ml |



| Order number | Designation  | Container |
|--------------|--|-----------|
| 270084900    | SHC 630 Gearbox oil, synthetic                     | 20 L      |
| 270129120    | Gearbox oil API - GL - SAE 90                      | 5 l       |
| 9260310      | Hydraulic oil HLP 46                               | 20 L      |
| 270100270    | Shell Spirax (wheel motors)                        | 20 L      |
| 270097190    | MAN and MTU engine oil                             | 20 L      |
| 270184770    | Glysantin (cooling water)                          | 20 L      |
| 270165150    | Gearbox oil Renolin Unisyn CLP 220                 | 20 L      |
| 270133080    | Mobil Glygoyle gearbox oil 460                     | 5 L       |
| 270144400    | SRS gearbox oil SML 80W-90 (BiG M 500 wheel motor) | 5 L       |
| 270191250    | Engine oil SAE 5W-30 (Liebherr)                    | 20 L      |
| 270226550    | PreChop oil SRS SXL 75W-90                         | 5 L       |





## **i** Restoring your Emsland dumper



You wish to restore your Emsland?

You'll need the following paints to restore your dumper:

**Varnish 750 ml (KRONE red)**

Order no.: 939 001 0

**Varnish 750 ml (KRONE brown)**

Order no.: 939 003 0

You furthermore need the following label kit for the restoration:

**Label kit KRONE dumper**

**Order no.: 287002640**

The kit comprises the labels 270197190 (label KRONE with logo (old) beige, 1 pc.), 9393111 (label Emsland beige, 2 pc.) and 9423010 (label KRONE beige, 2 pc.)



# Machine label

The following section includes a variety of existing KRONE labels with KRONE lettering and KRONE icon – available in different sizes in beige and green.



## Label “KRONE” lettering

Stand-alone logo and letters with transfer foil

| A     | B   | L    | Beige        | Green        |
|-------|-----|------|--------------|--------------|
| 28    | 17  | 155  | 27 001 064 0 |              |
| 36    | 22  | 200  | 00 942 298 0 | 00 942 297 0 |
| 67    | 41  | 370  | 00 942 296 0 | 00 942 333 0 |
| 90    | 56  | 500  | 00 942 295 0 |              |
| 90    | 56  | 510  |              | 27 004 668 0 |
| 109   | 67  | 600  | 00 942 320 0 | 00 942 299 0 |
| 140   | 86  | 775  | 00 942 301 0 | 00 942 323 0 |
| 150   |     | 801  |              | 27 007 6470  |
| 162   | 100 | 893  | 00 942 341 1 | 00 285 059 0 |
| 170   |     | 1010 |              | 27 002 802 0 |
| 180   | 111 | 995  | 00 293 912 0 | 00 293 873 0 |
| 202   |     | 1100 | 27 011 726 0 |              |
| 206.3 |     | 1125 | 27 014 725 0 |              |
| 225   | 140 | 1250 |              | 00 942 392 0 |
| 253   | 157 | 1400 | 00 942 393 0 | 00 942 243 0 |
| 253   | 157 | 1400 |              | 27 008 120 0 |
| 290   | 180 | 1600 | 27 002 392 0 | 00 293 834 0 |
| 341   |     | 1860 | 27 011 714 0 |              |
| 380   | 235 | 2100 | 27 000 067 0 |              |
| 405   | 250 | 2240 | 00 942 507 0 |              |



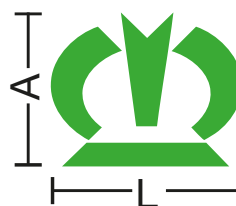




**Label KRONE solo**

Stand-alone logo with transfer foil

| A   | L   | beige        | Green        |
|-----|-----|--------------|--------------|
| 93  | 120 |              | 27 014 658 0 |
| 104 | 135 |              | 27 009 348 0 |
| 119 | 151 |              | 27 006 278 0 |
| 140 | 172 | 27 012 585 0 |              |
| 160 | 200 |              | 00 942 434 0 |
| 168 | 209 | 27 013 363 0 |              |
| 171 | 217 |              | 27 014 726 0 |
| 237 | 307 | 27 009 046 0 |              |







## Multi-brand accessories

Below please find a selection of frequently required parts which can be used not only for KRONE machines, but also for several farm machines of various brands. Your KRONE dealer will be pleased to advise you on the products and their characteristics.



### LED warning beacon (yellow)

Order no.: 20 082 459 0  
12/24 V, fastening for slip-on pipe,  
flexible mounting possible,  
incl. LED lighting fixture



### Warning beacon (yellow)

Order no.: 924 638 0  
12 V, fastening for slip-on pipe,  
flexible mounting possible, incl.  
bulb, replacement bulb (H1) can  
be ordered by stating order no.  
20 080 766 0



### Warning beacon (yellow)

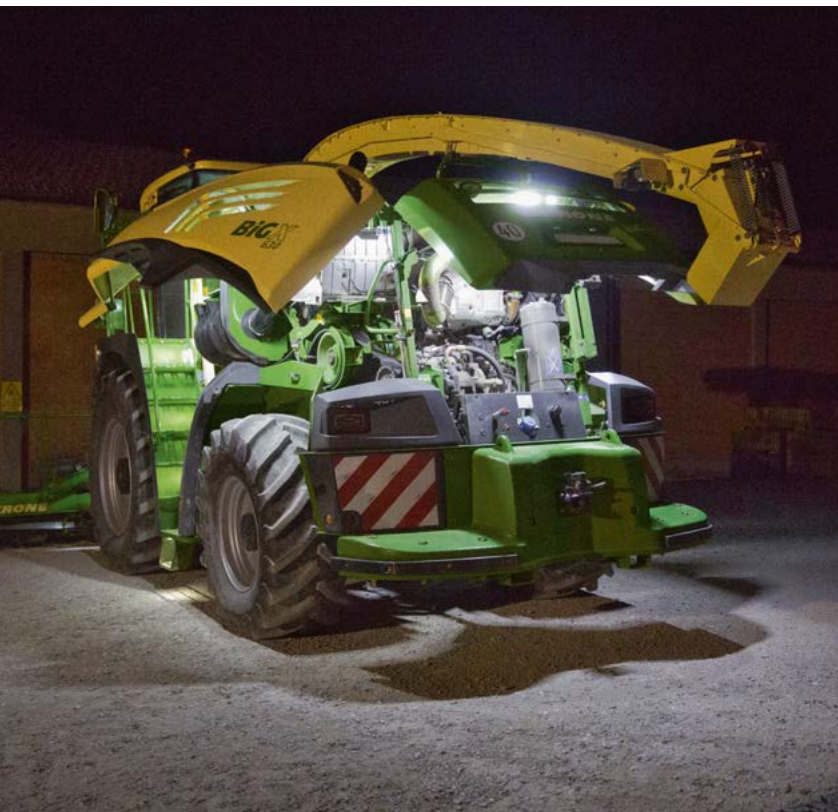
Order no.: 20 081 826 0  
24 V, fastening for slip-on  
pipe, flexible mounting possi-  
ble, incl. bulb,  
spare light bulb (H1): order no.  
20 084 784 0

### Suitable slip-on pipe, straight

Order no.: 220 657 0  
Adapter incl. rubber seal, can be screwed on

### Suitable slip-on pipe, 90° angle

Order no.: 20 081 267 0  
Adapter, tube with 90° angle, can be screwed on individually



### Headlight H3

Order no.: 20 081 231 0  
Close-range illumination, 12  
V, for individual fastening, incl.  
light bulb,  
spare light bulb:  
Order no. 924 688 0



### Headlight H3

Order no.: 20 081 232 0

Long-distance illumination, 12 V, for individual fastening, incl. bulb, spare bulb, can be ordered under order no. 924 688 0



### Working light H3

Order no.: 28 700 073 0

12 V, including light bulb, for individual fastening, Spare light bulb (H3): order no. 924 688 0



### LED working light

Order no.: 20 081 119 0

12 V, incl. LED lighting fixture, for individual fastening



### Working light H3

Order no.: 303 889 0

12 V, incl. 3.5 m line and bulb, for individual fastening, spare bulb (H3), can be ordered under order no. 924 688 0



### Working light H3

Order no.: 27 006 025 0

12 V, including light bulb, adjustable in all directions, for individual fastening, Spare light bulb (H3) can be ordered under order no. 924 688 0



### Working light H3

Order no.: 924 750 0

12/24 V, incl. bulb, adjustable in all directions, 195x96 mm, for individual fastening, spare bulb (H3) can be ordered under order no. 924 688 0



## Multi-brand accessories



### LED working light

Order no.: 20 082 484 0

12/24 V, fastening for slip-on pipe, flexible mounting possible, incl. LED lighting fixture



### LED working light

Order no.: 20 083 653 0

12/24 V, fastening for slip-on pipe, flexible mounting possible, incl. LED lighting fixture



### LED working light

Order no.: 20 084 960 0

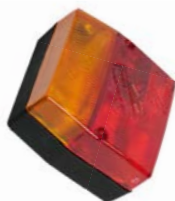
12/24 V, fastening for slip-on pipe, flexible mounting possible, incl. LED lighting fixture



### LED working light

Order no.: 27 006 025 0

12 V, fastening for slip-on pipe, flexible mounting possible, incl. LED lighting fixture



### Three-chamber lamp (left)

Order no.: 924 698 0

Three-chamber lamp (right)

Order no.: 924 697 0

12 V, incl. optional licence plate lighting,  
Light bulb can be ordered under order no. 924 693 0 (12 V/21 W)  
resp. under order no. 924 709 0 (12 V/5 W)



### Flashing and tail lamp (left)

Order no.: 303 204 3

Flashing and tail lamp (right)

Order no.: 303 205 3

12 V, incl. bulbs,

spare bulbs:

Order no. 924 709 0 (12 V/5 W) resp.

Order no.: 924 693 0 (12 V/21 W)



**Flashing and tail lamp (left)**

Order no.: 302 772 3

Flashing and tail lamp (right)

Order no.: 302 771 3

12 V, incl. bulbs, spare bulbs can be ordered under order no. 924 736 0 (12 V/5 W) or 924 693 0 (12 V/21 W)



**Five-chamber lamp (left)**

Order no.: 302 534 1

Five-chamber lamp (right)

Order no.: 302 535 1

12 V, incl. bulbs, spare bulbs can be ordered under order no. 924 693 0 (12 V/21 W) or 924 692 0 (12 V/10 W), length: 343 mm, height: 133 mm, depth: 75 mm



**LED function light (left)**

Order no.: 20 082 458 0

LED function light with integrated rear reflector, left

LED function light (right)

Order no.: 20 082 492 0

LED function light with integrated rear reflector, right



**LED light**

Order no.: 20 082 493 0

12/24 V



**Three-chamber lamp**

Order no.: 20 084 216 0

S/B/BL, hybrid 4-p, DT, 12 V



**Three-chamber lamp**

Order no.: 20 084 448 0

S/B/BL, hybrid 4-p, FI.H, 12 V





## Multi-brand **accessories**



### **LED outline marker lamp (left)**

Order no.: 27 008 297 0

LED outline marker lamp (right)

Order no.: 27 008 298 0

12 V, white/red, incl. LED lighting fixture



### **LED position lamp**

Order no.: 27 007 911 0

12 V, white, incl. 2-meter-line and LED lighting fixture



### **Front position lamp**

Order no.: 303 229 1

12 V, white/red, incl. bulb,

spare light bulb can be ordered under order no. 924 736 0



### **Front position lamp**

Order no.: 924 611 0

12/24 V, white



### **LED side marker lamp**

Order no.: 20 083 513 1

DT 12/24V attachm.



### **LED module**

Order no.: 20 084 882 0

12 V 2.45 W/0.25 W



#### **Reading lamp**

Order no.: 924 765 0

Halogen reading lamp incl. 12 volt-bulb with integrated On/Off switch in the illumination head, can be turned by 330°, for individual fastening



#### **Licence plate lamp**

Order no.: 924 639 0

12/24 V, suitable bulb can be ordered under order no. 924 709 0 (12 V/5 W)



#### **LED strip, working lights**

Order no.: 20 081 281 1

12 V, length 500 mm, incl. LED lighting fixture, for individual fastening



#### **LED side marker lamp**

Order no.: 20 082 506 0

LED 2-p, DT, 12/24 V inst.



#### **Lighting housing kit**

Order no.: 20 083 976 0

Housing kit for mounting a lighting system for trailed machines



#### **LED licence plate holder KRONE**

Order no.: 20 082 609 0

12/24 V, inscription [www.krone.de](http://www.krone.de)



# Multi-brand accessories



### Bulb, ball shape

Order no.: 924 692 0  
12 V, 10 W, BA 15s



### Bulb, drop shape

Order no.: 924 693 0  
12 V, 21 W, BA 15s

### Festoon bulb

Order no.: 924 709 0  
12 V, 5 W, SV 8.5-8



### Bulb H4

Order no.: 924 714 0  
12 V, 60/55 W, P43t



### Halogen H9

Order no.: 924 767 0  
12 V, 65 W, PGJ 19-5



### Halogen H3

Order no.: 20 081 861 0  
24 V, 70 W, PK 22s



### Bulb, drop shape

Order no.: 20 083 230 0  
24 V, 21 W, BAU 15s



### Bulb, drop shape

Order no.: 20 084 009 0  
24 V, 21 W, BA 15s



### Bulb H7

Order no.: 20 084 300 0  
12 V, 55 W, PX 26 d



### Halogen H7

Order no.: 20 084 783 0  
24 V, 70 W, PX 26 d



### Halogen H1

Order no.: 20 084 784 0  
24 V, 70 W, P 14.5s



**Warning panel made of metal**

Order no.: 924 685 0

423 x 423 mm, warning panel made of metal, applicable for the left or right side, various perforations for individual fastening



**Warning panel made of metal, stripes pointing downwards to the left**

Order no.: 27 003 047 0

Warning panel made of metal, stripes pointing downwards to the right

Order no.: 27 003 048 0

423 x 282 mm, warning panel made of metal, various perforations for individual fastening



**Warning panel made of plastic, front left/rear right**

Order no.: 27 016 881 0

Warning panel made of plastic, front right/rear left

Order no.: 27 016 880 0

300 x 300 mm, warning panel made of plastic, for individual fastening



**Warning foil**

Order no.: 924 569 0

423 x 423 mm, applicable for left and right side, adhesive film for individual fastening



**Warning foil, stripes pointing downwards to the left**

Order no.: 27 006 976 0

Warning foil, stripes pointing downwards to the right

Order no.: 27 006 982 0

282 x 282 mm, adhesive film for individual fastening



**Warning foil, stripes pointing downwards to the right**

Order no.: 27 011 949 0

Warning foil, stripes pointing downwards to the left

Order no.: 27 011 950 0

564 x 141 mm, adhesive film for individual fastening, flexible and removable





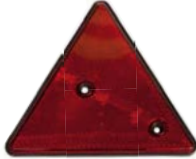
# Multi-brand accessories



### Warning foil

Order no.: 27 016 421 1  
Label for lighting housing kit,  
rear left,  
rear front, fully reflecting

Order no.: 27 016 622 1  
Label for lighting housing kit,  
rear right,  
front left, fully reflecting



### Triangular rear reflector (red)

Order no.: 924 532 0  
individually screw-mountable



### Spots

Round, individually  
screw-mountable

### Rear reflector (red)

Order no.: 924 535 1

Front spotlights (white)

Order no.: 924 537 0

Limiting light (yellow)

Order no.: 924 536 1



### Contour marking

Order no.: 20 059 285 0  
Self-adhesive contour marking,  
reflectors, 50-meter roll



### Tempo label

Label size: 200 mm,  
size of digits: 120 mm

### 25 km/h

Order no.: 939 218 1

### 62 km/h

Order no.: 939 159 1

### 40 km/h

Order no.: 939 145 1

### 65 km/h

Order no.: 942 364 0

### 50 km/h

Order no.: 942 436 0

### 80 km/h

Order no.: 942 028 0

### 60 km/h

Order no.: 939 175 1



**Dust cap (green)**  
Order no.: 919 616 0

Dust cap (blue)  
Order no.: 921 263 1

Dust cap (red)  
Order no.: 921 171 1

Dust cap (yellow)  
Order no.: 921 265 1



**Hinged lid (blue)**  
Order no.: 916 602 0

Hinged lid (red)  
Order no.: 919 994 0



**Coupling plug**  
Order no.: 919 322 0  
L BG3 M 18 x 1.5



**Coupling sleeve**  
Order no.: 919 323 0  
L BG3 M 18 x 1.5



**Coupling plug**  
Order no.: 921 133 0  
L BG2 12 L M 18 x 1.5



**Coupling sleeve**  
Order no.: 921 130 0  
L BG3 12 L M 18 x 1.5



**Coupling plug**  
Order no.: 921 145 0  
L BG3 M 18 x 1.5



**Coupling sleeve**  
Order no.: 921 131 2  
L BG3 15 L M 22 x 1.5



**Coupling plug**  
Order no.: 921 146 0  
L BG3 15 L M 22 x 1.5



**Coupling sleeve**  
Order no.: 921 151 0  
L BG2 12 L M 18 x 1.5



**Coupling plug**  
Order no.: 921 167 0  
LL BG3 18 L M 26 x 1.5



**Support for fire extinguisher**  
Order no.: 938 963 0  
Support suitable for above mentioned powder fire extinguisher, for individual fastening



**Powder fire extinguisher**  
Order no.: 938 962 0  
Make: Gloria, 12 kg, cartridge-operated fire extinguisher with foam LIGHT WATER (film binding extinguishing agent)



# Multi-brand accessories



**Push button on-off**  
Order no.: 302 723 0  
1 x S 0.1 A, yellow  
Push button on-off  
Order no.: 302 724 0  
1 x S 0.1 A, green



**Filler cap**  
Order no.: 940 086 0  
80 mm, cannot be locked



**Filler cap**  
Order no.: 940 123 0  
80 mm, can be locked



**Tank cover**  
Order no.: 27 014 452 1  
129.3 mm, can be locked



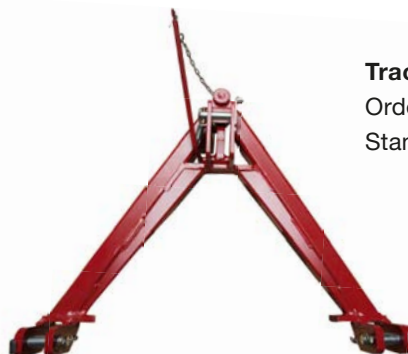
**Wheel**  
Order no.: 953 058 1  
16 x 6.50-8 10 PR C-737 (groove)



**Wheel**  
Order no.: 953 059 2  
18 x 8.50-8 6 PR C-737 (groove)



**Tool box with universal tools**  
Order no.: 940 454 0



**Tractor triangle**  
Order no.: 232 530 0  
Standard, complete



**Cable winch**

Order no.: 20 421 172 0  
Cable winch with deflection roll,  
technical data available on request,  
for individual fastening



**Electric cable winch**

Order no.: 27 006 289 6  
Length of steel cable: 6 m,  
technical data available on  
request, for individual fastening



**Steel cable**

Order no.: 922 900 1  
sold by meter, diameter: 5 mm,  
the ordered quantity is the no. of metres



**Synthetic rope**

Order no.: 925 113 0  
sold by meter, diameter: 6 mm,  
the ordered quantity is the no. of metres



**Telescopic top link 500**

Order no.: 923 222 0  
CAT II, setting range: approx. 495 - 680 mm



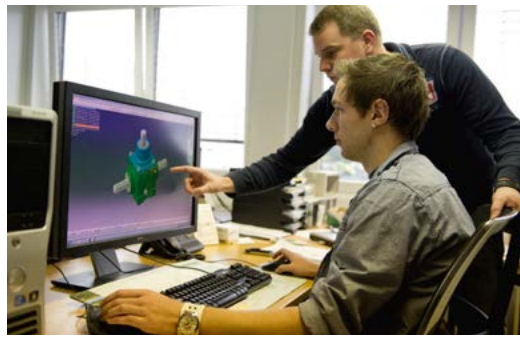
**Starter battery 12 V**

Order no.: 20 081 737 0  
Make: Varta, 12 V, 135 Ah, 1000 A,  
long lifetime and reliable cold start power,  
dimensions: 514 x 175 x 210 mm



# Maschinenfabrik Bernard KRONE

Perfect in every detail



Innovative, proficient and close to our customers – these are the keywords that mark the philosophy of our family-owned company. As a forage specialist, KRONE manufactures disc mowers, tedders, rakes, forage wagons and silage trailers, round and square balers as well as the high-capacity and self-propelled BiG M mower conditioners and our BiG X forage harvesters. Quality made in Spelle – since 1906.

Your KRONE dealer



**Maschinenfabrik Bernard KRONE GmbH & Co. KG**

Heinrich-Krone-Straße 10  
D-48480 Spelle

Phone: +49 (0) 5977 935-0  
Fax: +49 (0) 5977 935-339

[info.ldm@krone.de](mailto:info.ldm@krone.de) | [www.krone.de](http://www.krone.de)